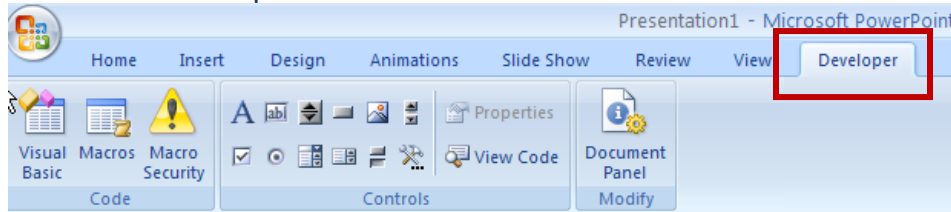

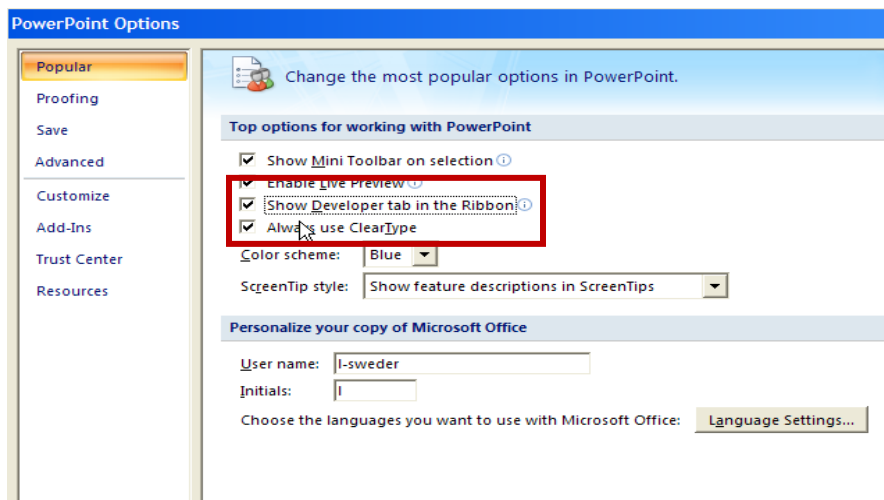


# ActiveX Textbox in PowerPoint 2007 Presentation

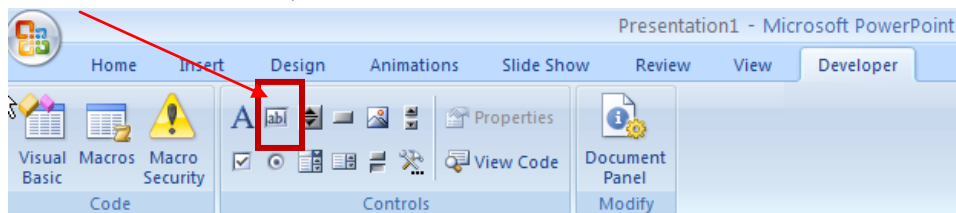
1. Open PowerPoint 2007
2. Select the Developer Ribbon tab



3. If the developer ribbon tab is not visible, select the Office Button  and select PowerPoint Options near the bottom of the opened Office Button window. Check the Show Developer tab in the Ribbon and click OK.



4. Select the ActiveX tool and draw a box on the slide



5. Rt. click inside the ActiveX box drawn and select properties. Make 2 changes:
  - Multiline = True
  - EnterKeyBehavior = True

*Changing these two lines will allow you to type more than one line in the box and you will be able to go to the next line by hitting ENTER.*